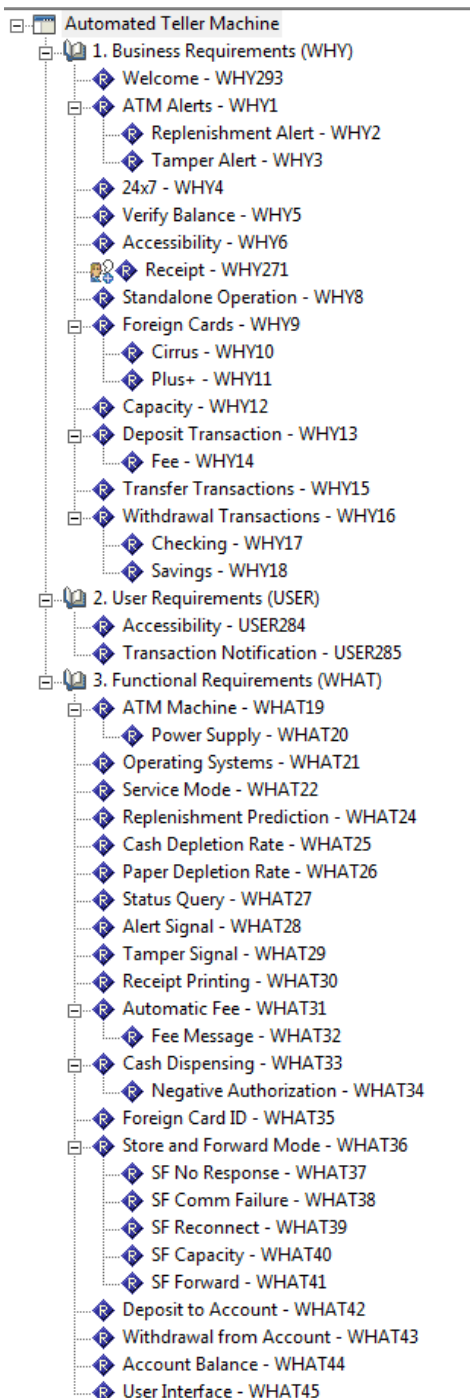


CaliberRM -> EA Integration Add-In

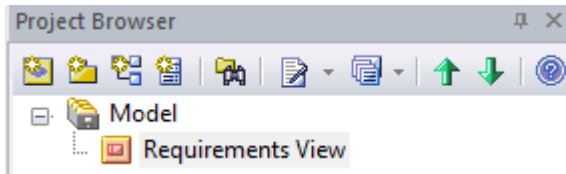
This document describes the functionality of an add-in for Enterprise Architect version 9.0 which allows the importing of Requirements stored in a CaliberRM baseline into an existing Enterprise Architect project.

The following screen shot illustrates a set of requirements stored currently in CaliberRM:

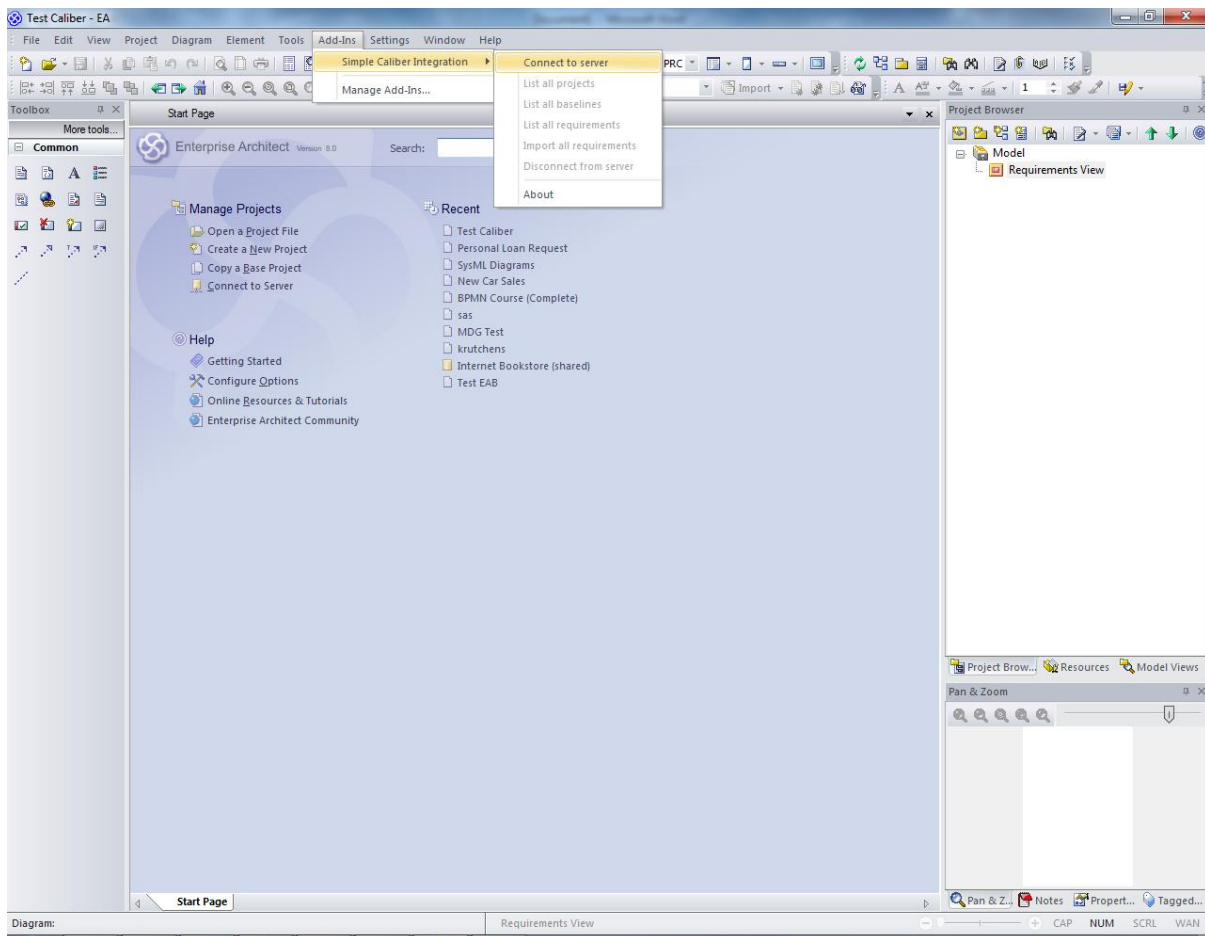


The import process will be illustrated in the following screen shots, using a new empty Enterprise Architect project

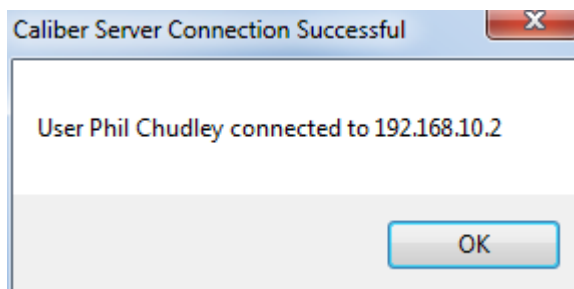
The import process begins by selecting a **View** or **Package** where the requirements will be imported:



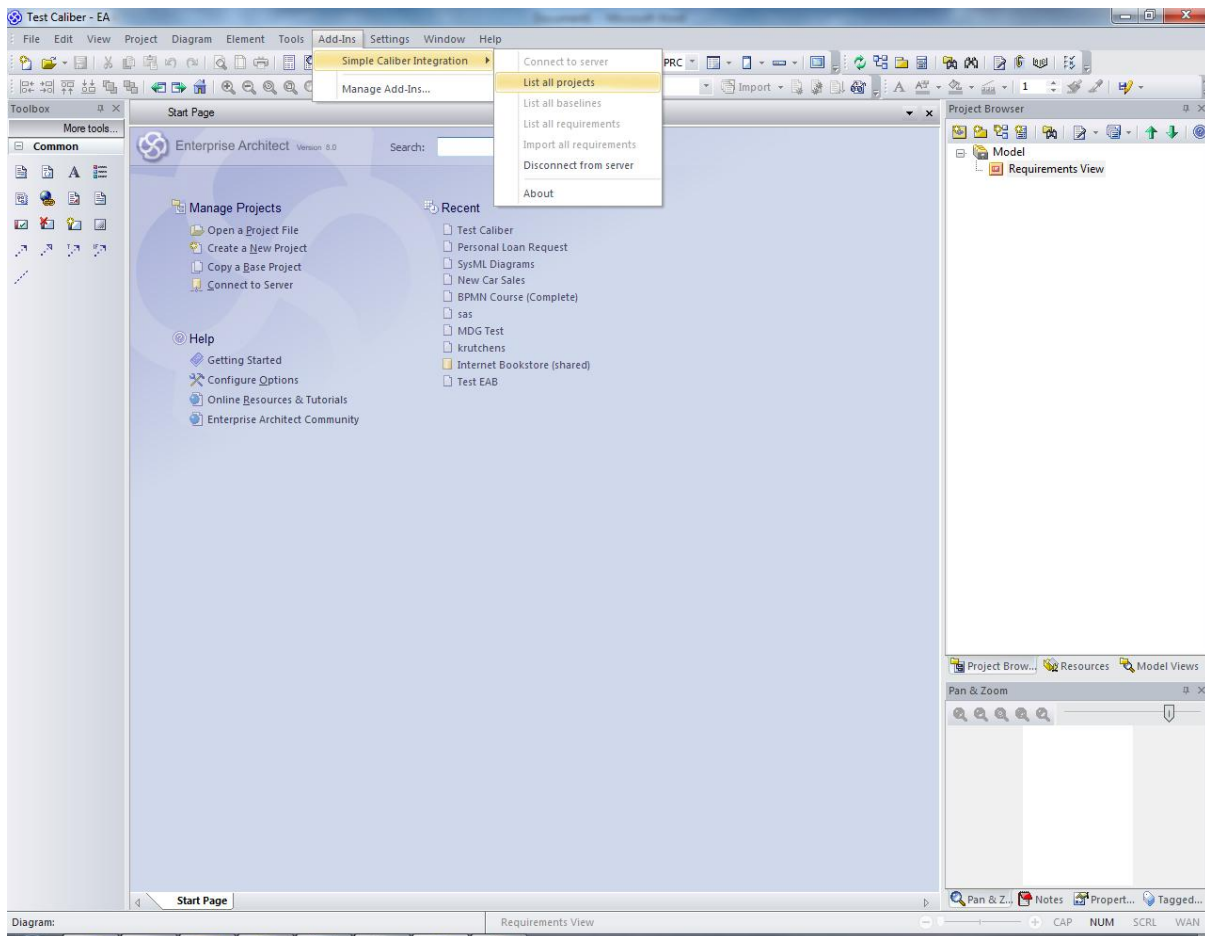
Then using the **Add-Ins** menu the **Connect to Server** menu option is selected:



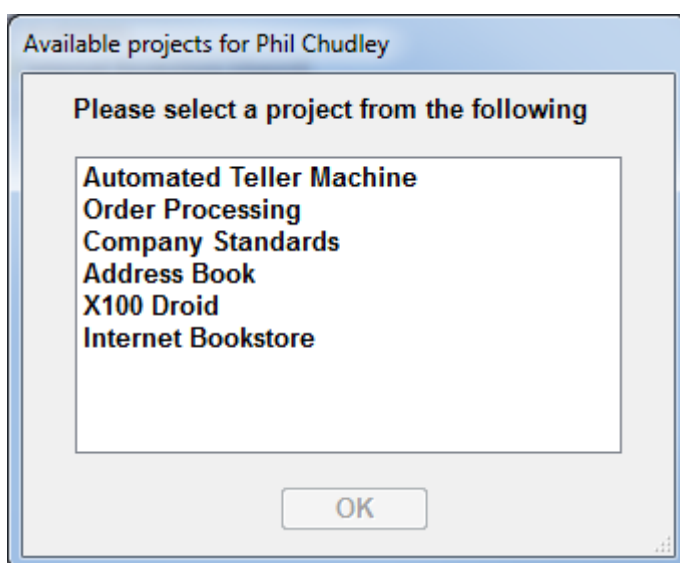
The following dialogue is displayed after a successful connection:



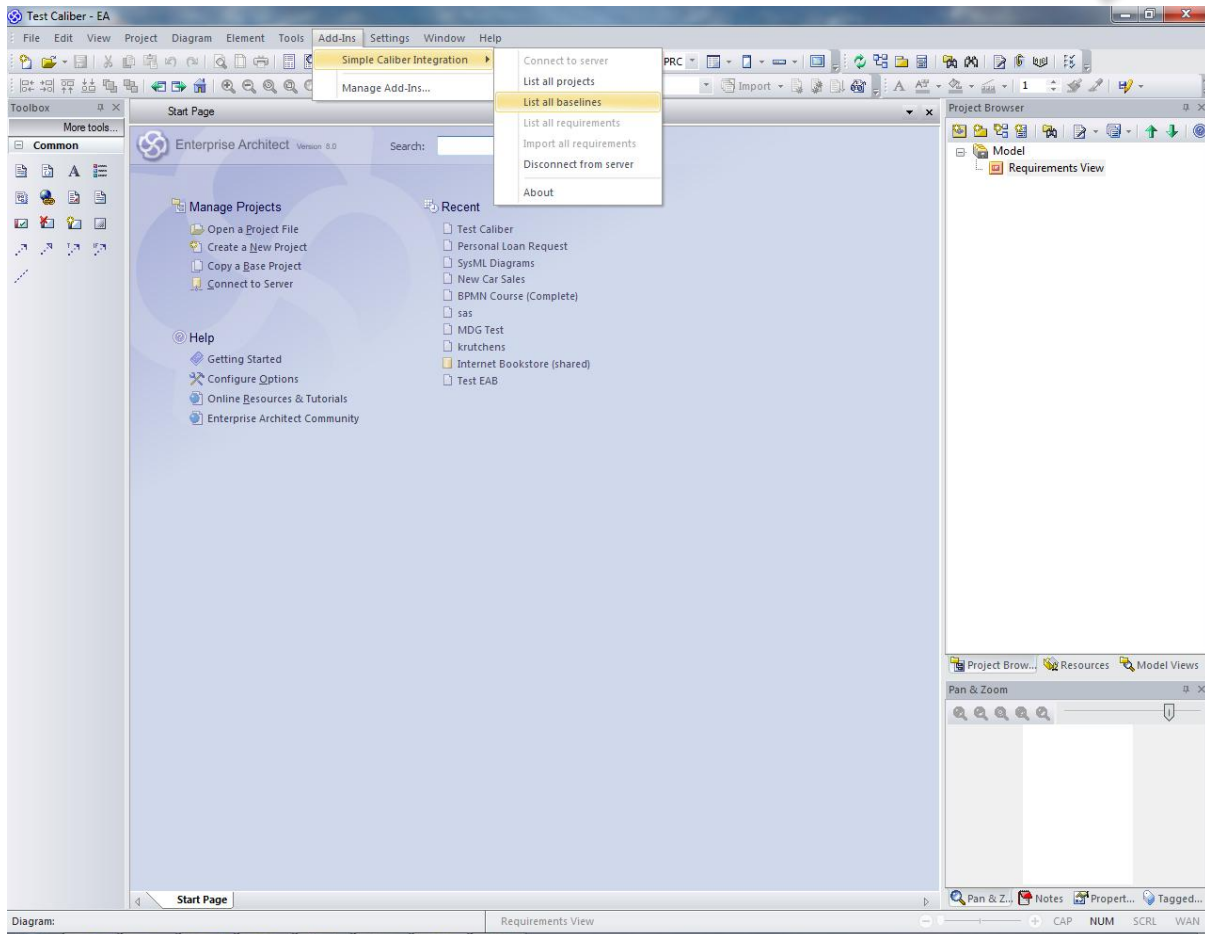
Upon clicking OK, other menu options on the Add-In are enabled (namely the ability to select a project, or disconnect):



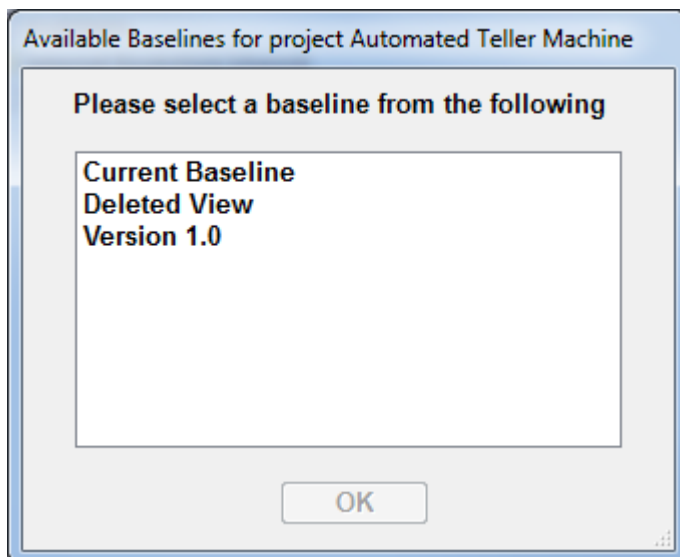
Choosing the **List all projects** option, extracts all projects for the logged in user and displays as:



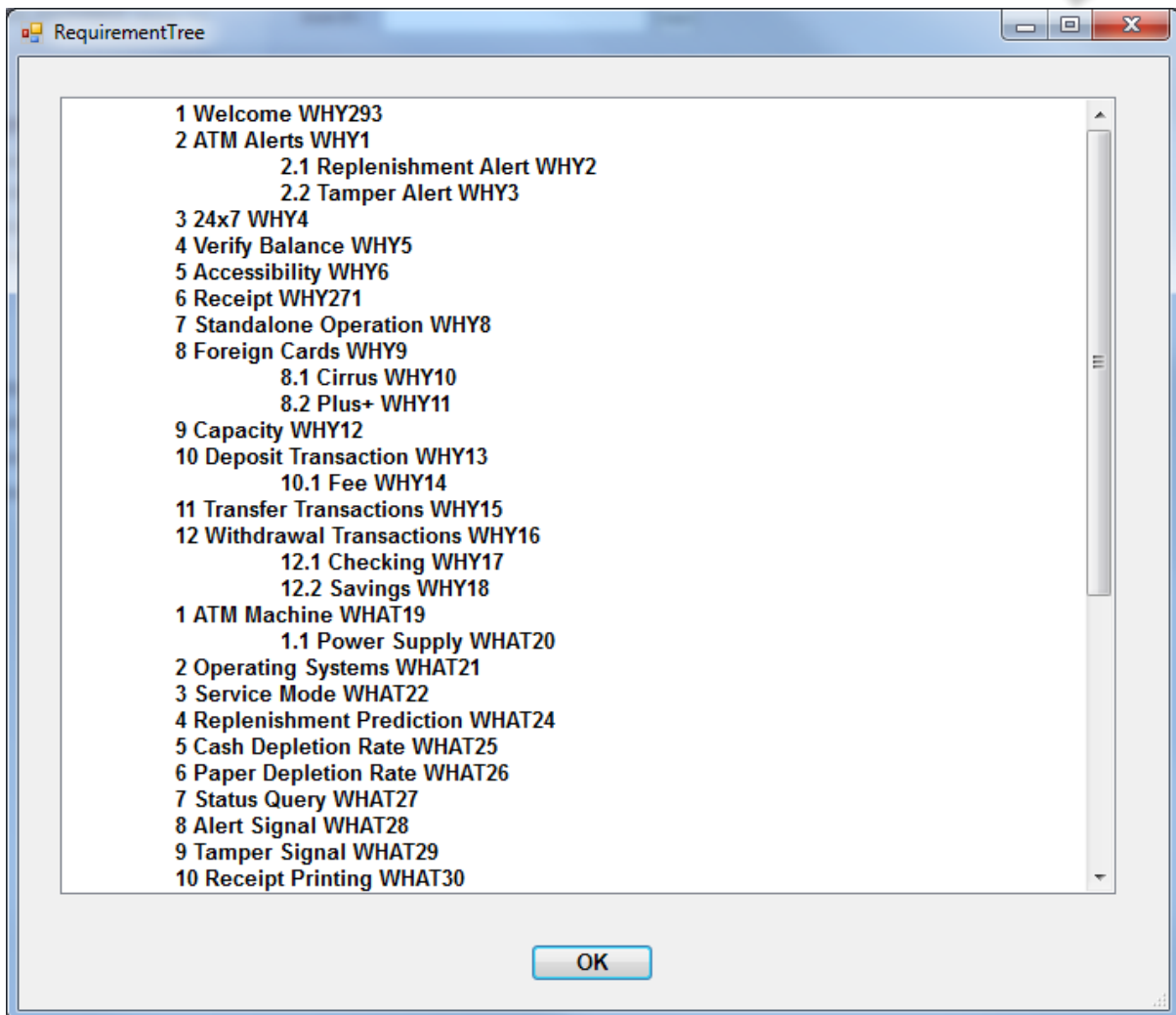
A project is selected which then enables the menu option to list the baselines for the project selected:

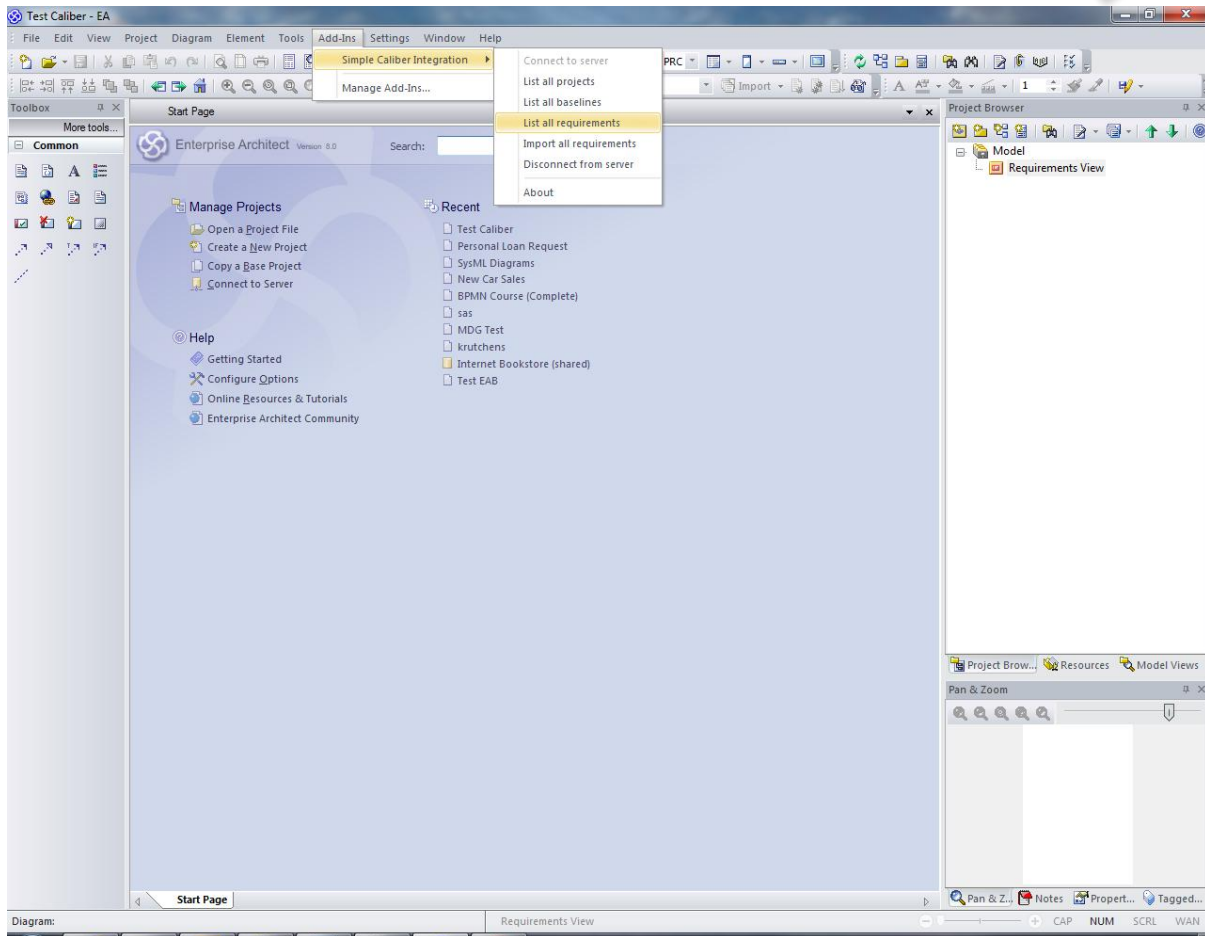


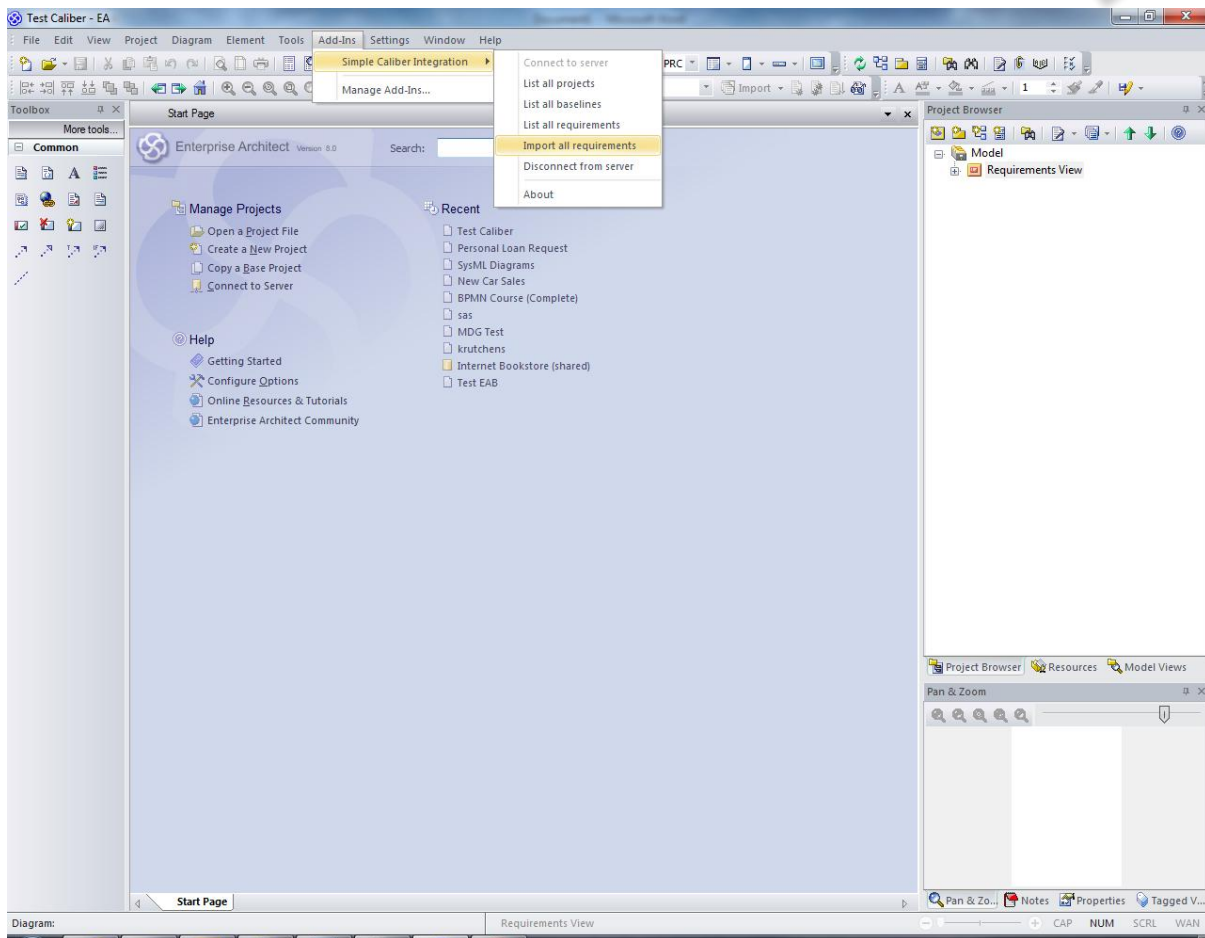
Selecting the option **List all baselines** extracts the baselines for the currently selected project and displays them as:



A baseline is selected which then allows the user to list the requirements in the baseline or import all requirements in the baseline:









Project Browser

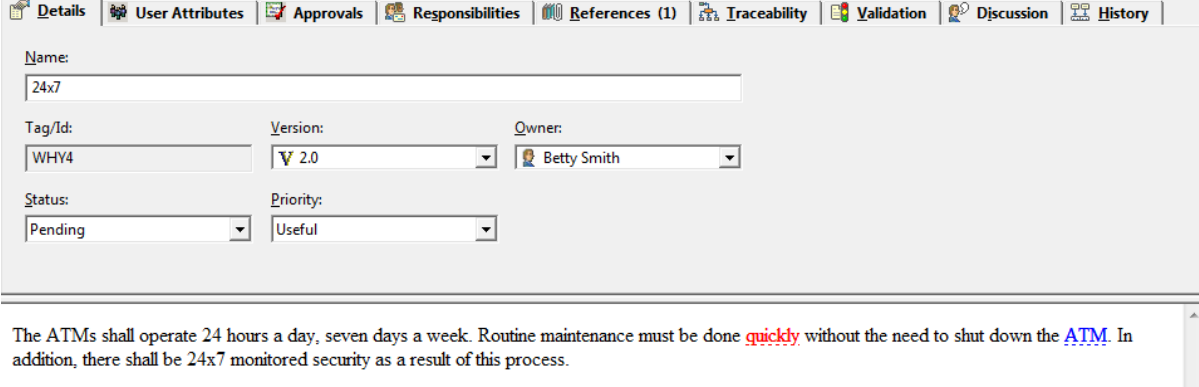
Model

- Requirements View
 - 1. Business Requirements (WHY)
 - 24x7 - WHY4
 - ATM Alerts - WHY1
 - Replenishment Alert - WHY2
 - Tamper Alert - WHY3
 - Accessibility - WHY6
 - Capacity - WHY12
 - Deposit Transaction - WHY13
 - Fee - WHY14
 - Foreign Cards - WHY9
 - Cirrus - WHY10
 - Plus+ - WHY11
 - Receipt - WHY271
 - Standalone Operation - WHY8
 - Transfer Transactions - WHY15
 - Verify Balance - WHY5
 - Welcome - WHY293
 - Withdrawal Transactions - WHY16
 - Checking - WHY17
 - Savings - WHY18
 - 2. User Requirements (USER)
 - Accessibility - USER284
 - Transaction Notification - USER285
 - 3. Functional Requirements (WHAT)
 - ATM Machine - WHAT19
 - Power Supply - WHAT20
 - Account Balance - WHAT44
 - Alert Signal - WHAT28
 - Automatic Fee - WHAT31
 - Fee Message - WHAT32
 - Cash Depletion Rate - WHAT25
 - Cash Dispensing - WHAT33
 - Negative Authorization - WHAT34
 - Deposit to Account - WHAT42
 - Foreign Card ID - WHAT35
 - Operating Systems - WHAT21
 - Paper Depletion Rate - WHAT26
 - Receipt Printing - WHAT30
 - Replenishment Prediction - WHAT24
 - Service Mode - WHAT22
 - Status Query - WHAT27
 - Store and Forward Mode - WHAT36
 - SF Capacity - WHAT40
 - SF Comm Failure - WHAT38
 - SF Forward - WHAT41
 - SF No Response - WHAT37
 - SF Reconnect - WHAT39
 - Tamper Signal - WHAT29
 - User Interface - WHAT45
 - Withdrawal from Account - WHAT43

Help
Show Help about the Project Browser window

Selecting a requirement and displaying its properties verifies the description has been imported:

Requirement **24x7** - **WHY4** in CaliberRM

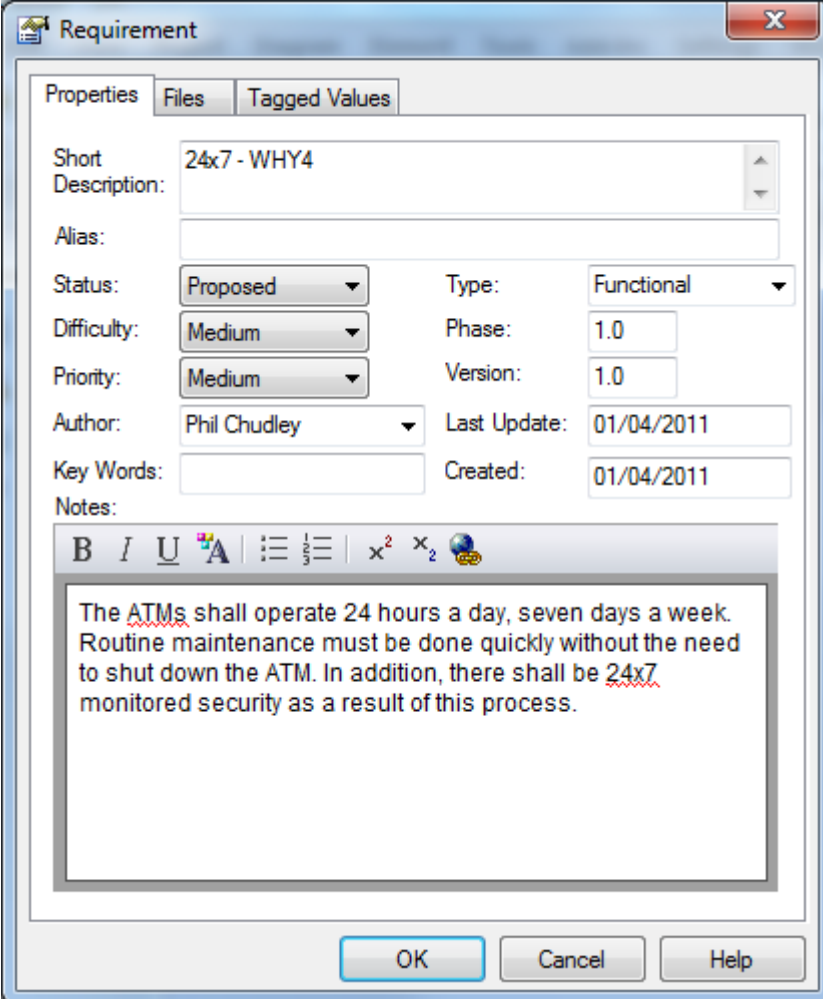


The screenshot shows the 'Details' tab of a requirement in CaliberRM. The fields are as follows:

Name:	24x7		
Tag/Id:	Version:	Owner:	
WHY4	Ψ 2.0	Betty Smith	
Status:	Priority:		
Pending	Useful		

The description text below the form reads: "The ATMs shall operate 24 hours a day, seven days a week. Routine maintenance must be done **quickly** without the need to shut down the **ATM**. In addition, there shall be 24x7 monitored security as a result of this process."

Requirement **24x7** – **WHY4** in Enterprise Architect



The screenshot shows the 'Requirement' dialog box in Enterprise Architect. The 'Properties' tab is active, showing the following details:

Short Description:	24x7 - WHY4		
Alias:			
Status:	Proposed	Type:	Functional
Difficulty:	Medium	Phase:	1.0
Priority:	Medium	Version:	1.0
Author:	Phil Chudley	Last Update:	01/04/2011
Key Words:		Created:	01/04/2011

The 'Notes' field contains the following text: "The ATMs shall operate 24 hours a day, seven days a week. Routine maintenance must be done quickly without the need to shut down the ATM. In addition, there shall be 24x7 monitored security as a result of this process."

The highlighted terms in the CaliberRM requirement description signify links to the Caliber Glossary.

It is possible to import the remaining requirement attributes from CaliberRM and will involve managing a mapping from CaliberRM attributes to Enterprise Architect tagged values (something that is **NOT** possible with **CSV** import)