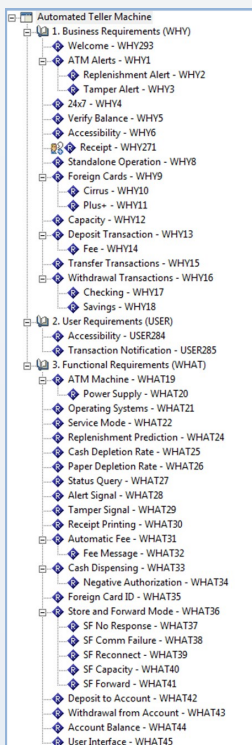




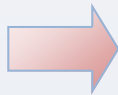
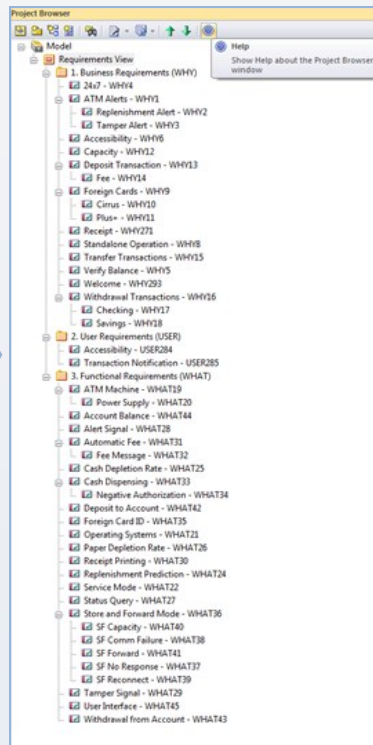
calEAbrate - CaliberRM EA integration

calEAbrate imports CaliberRM requirements into Enterprise Architect (EA)

CaliberRM



EA



5 steps to integration

1. CaliberRM
2. Import
3. Connection
4. Project selection
5. EA

1. CaliberRM

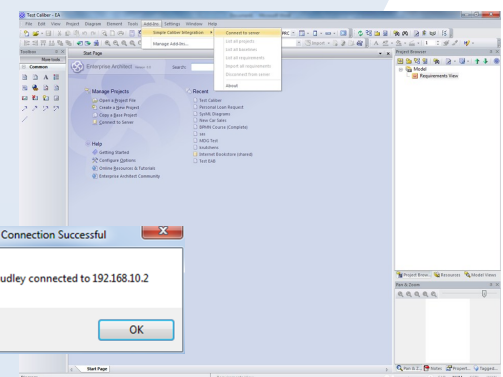
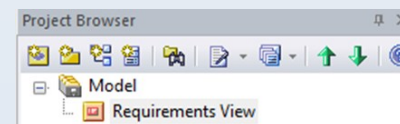
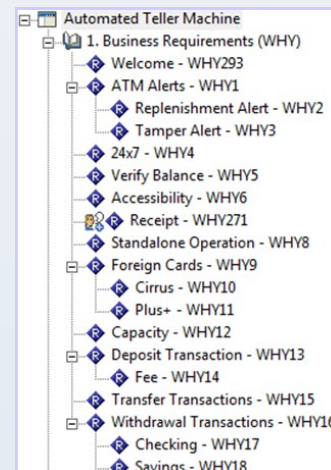
A set of requirements are stored in CaliberRM

2. Import

The import process begins by selecting a **View** or **Package** where the requirements will be imported:

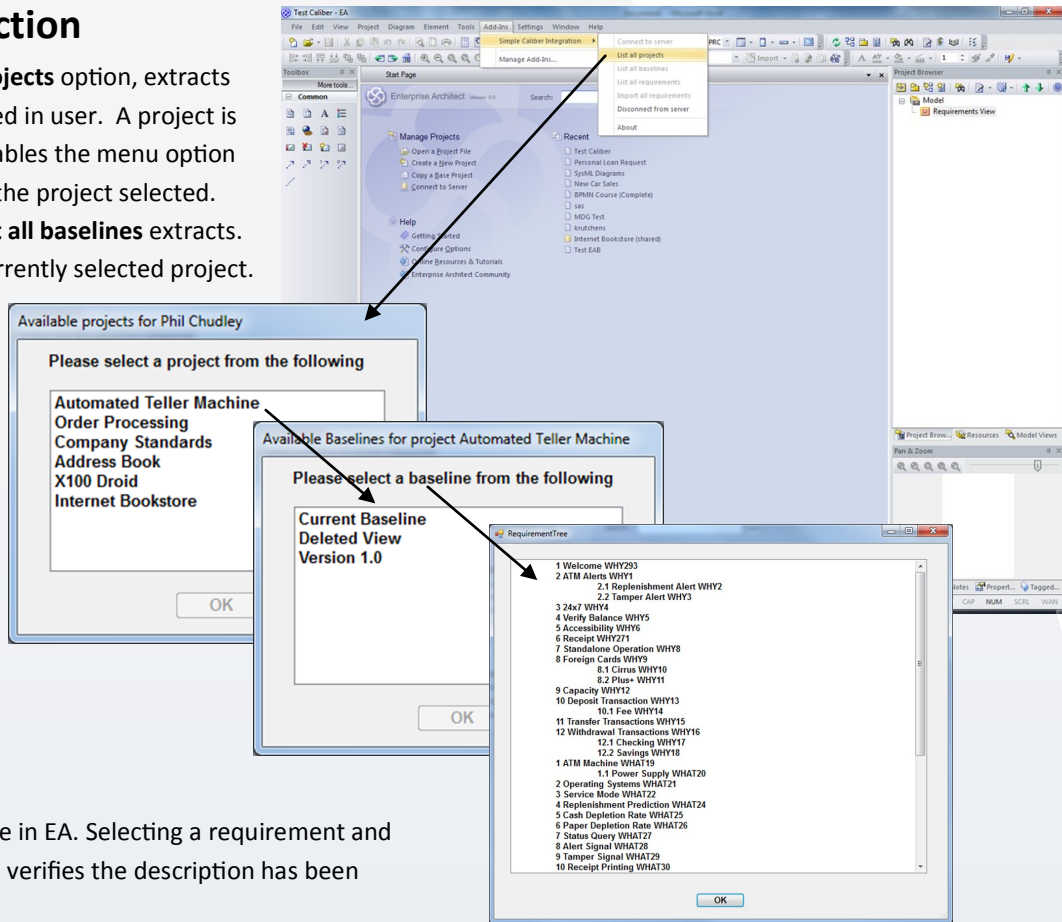
3. Connection

Then using the **Add-Ins** menu the **Connect to Server** menu option is selected. On successful connection clicking OK, other menu options on the Add-In are enabled (namely the ability to select a project, or disconnect):



4. Project Selection

Choosing the **List all projects** option, extracts all projects for the logged in user. A project is selected which then enables the menu option to list the baselines for the project selected. Selecting the option **List all baselines** extracts the baselines for the currently selected project.



4. EA

The project is now active in EA. Selecting a requirement and displaying its properties verifies the description has been imported.

